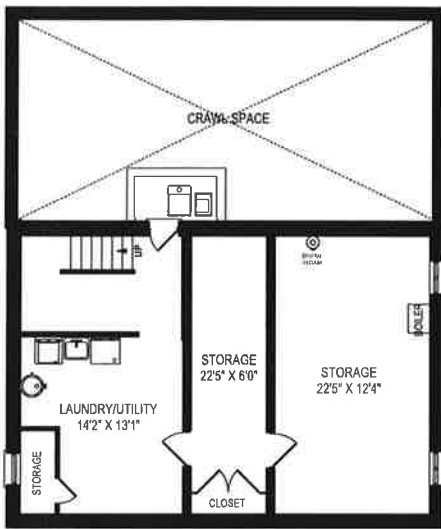
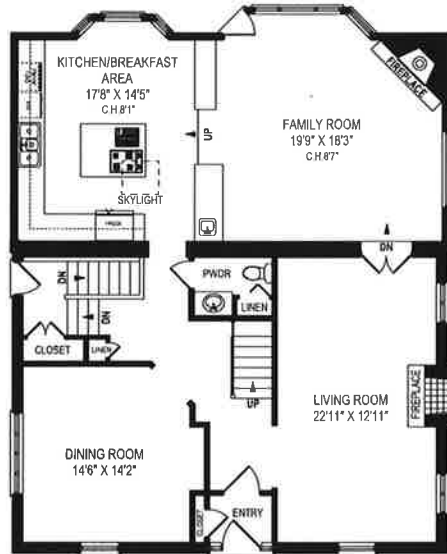


65 Lytton Boulevard, Toronto

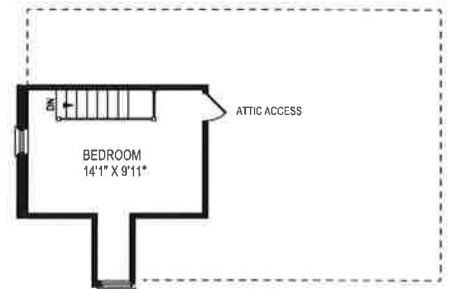
FLOOR PLAN



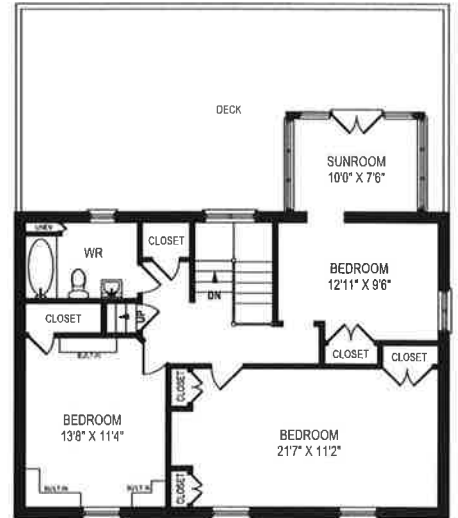
LOWER LEVEL
668 SQUARE FEET
CEILING HEIGHT 9'



MAIN FLOOR
1495 SQUARE FEET
CEILING HEIGHT 9'



THIRD FLOOR
185 SQUARE FEET
CEILING HEIGHT 8'1"



SECOND FLOOR
954 SQUARE FEET
CEILING HEIGHT 8'4"

May 21, 2019
Note: Although measurements and area believed to be accurate they should be considered approximate. This drawing was prepared by Plan4U for the sole benefit and use by the client. No third party may rely on this drawing without the receipt of reliance letter from Plan4U